

## Easy Kap 80 (ø3.2") Square Wall-Washer Ceiling Recessed Trim Downlight

### Description

LED luminaire for recessed mounting into plasterboard ceilings. The Easy Kap version has an aluminium injected body with a liquid paint, dust and/or metallic copper finish with a plastic diffuser included. It does not need a pre-installation frame. Thanks to remote-phosphor technology, the LED modules of the Phosphor LED version offer maximum quality light, the perception of objects and spaces, reaching chromatic reproduction indices of 90. The LED modules installed on the LED Array versions have cutting-edge technology that permits a lower average temperature in the electronics. Thanks to this feature, the luminaire can operate at a higher power inside the safety parameters yet still offer 20% added luminous flux.

### Lamps

LED ARRAY: Bridgelux  
 9.2W, 935lm, 2700K, CRI 90  
 9.2W, 974lm, 3000K, CRI 90

Delivered lumens\* from 565lm up to 732lm.

\*Depending on the beam angle, reflector finish and diffuser.

### Construction

Luminaire body made of die cast aluminium  
 Plastic diffuser included  
 Embedded luminaire for LED light source  
 Factory suggest 5" minimum plenum height

### Photometrics

For current IES files please visit [usa.flos.com](http://usa.flos.com)

### Warranty

2 years from date of sale.

### Finish

01 White  CU Copper  14 Black



BU Blue  GL Matt Gold



### Electrical

Fixture is constant current, low voltage LED with integral power supply

Fixture is 9.2 watts

### Notes

Pre-installation frame has to be ordered separately

Non IC rated luminaire

Splice Box has to be ordered separately.  
 3 Options:

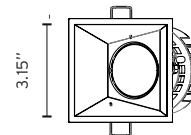
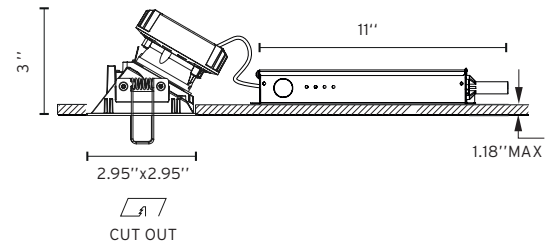
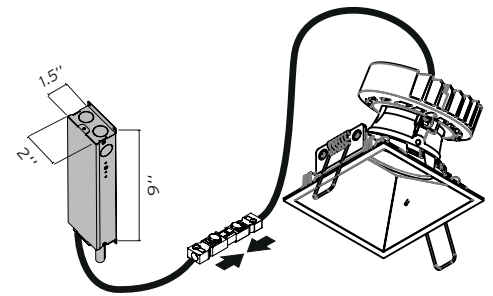
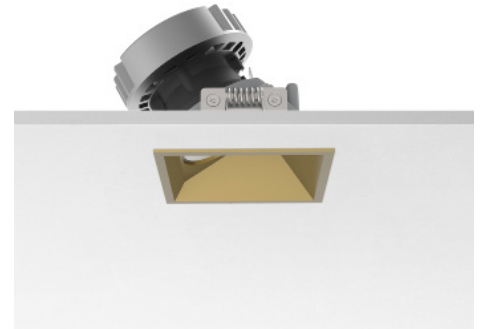
- 0-10V Dimming 120V
- 0-10v Dimming 277 V
- ELV Dimming 120 V

Available in 5 different finishes: Black, White, Gold, Copper and Blue

Maximum tilt angle for the Kap 80 (3.2") adjustable version is 20°

LED included not replaceable

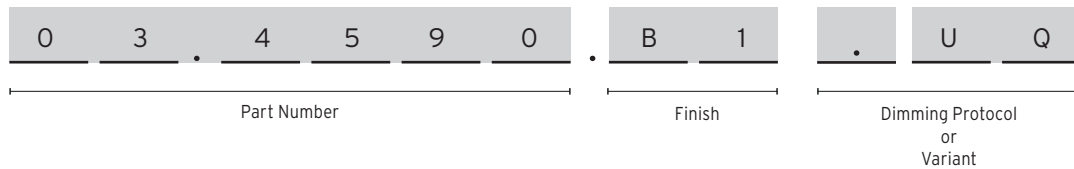
Listings: UL listed, IP44



## Easy Kap 80 (ø3.2") Square Wall-Washer

Ceiling Recessed Trim Downlight

### How to Specify



How to Specify ex. 03.4590.B1.UQ

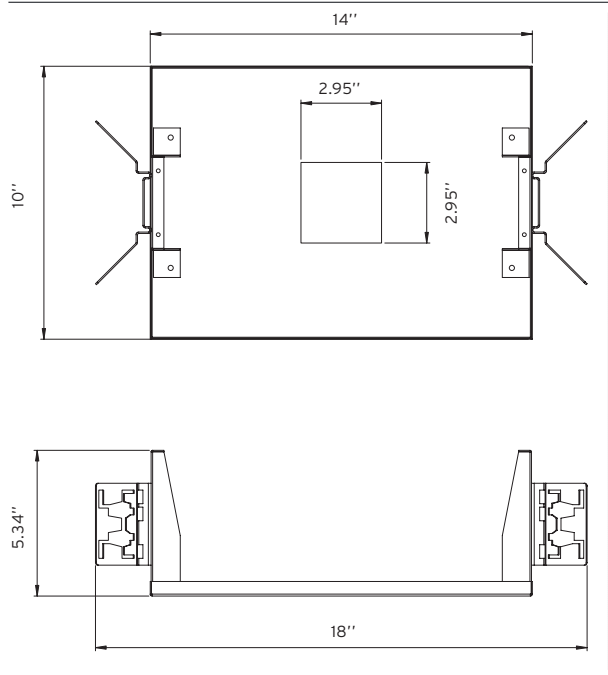
Part Number	CCT	CRI	Initial Lumens	Watts	Beam Angle	Finish	Dimming Protocol
03.4198	3000	90	974	9.2W	19°	□ B1 = White ■ 74 = Black ■ CU = Cooper ■ BU = Blue ■ GL = Gold	UQ = US product. Splice Box* not included *Has to be Always supply by FLOS
03.4199	2700	90	935				

### Required Splice Box

QTY	Image	Item Number	Description
		SP14W500MA-ELV-E01	Splice Box 14W, 20% dim, ELV, 120V. Size: 11" x 2" x 1.5"
		SP14W500MA-120-V01	Splice Box 14W, 1% dim, 0-10V, 120V. Size: 11" x 2" x 1.5"
		SP14W500MA-277-V01	Splice Box 14W, 1% dim, 0-10V, 277V. Size: 11" x 2" x 1.5"

**Easy Kap 80 (Ø3.2") Square Wall-Washer**  
Ceiling Recessed Trim Downlight

**Optional Accessories**

Image	QTY	Item Number	Description
		TRAY-0002	Registration Tray -non electrical, place holder for non IC new construction, 2.95" x 2.95"