

Kap ø80 (ø3.2") Round Adjustable

Ceiling Recessed Trimless Downlight

Fixture Type

Job Name

Description

LED trim-less luminaire for recessed mud-in mounting into plasterboard. Die-cast aluminum body with satin or metallic paint finish. A pre-installation frame is required. This LED downlight uses cutting edge technology which creates a higher powered downlight due to cooler operating electronics yielding 20% higher luminous flux than earlier models. The Trimless Ø80 mm (3.2") version has an exclusive Fast&Perfect installation tool.

Lamps

LED ARRAY: Bridgelux
9.2W, 935lm, 2700K, CRI 90
9.2W, 974lm, 3000K, CRI 90

Delivered lumens* from 471lm up to 725lm.

*Depending on the beam angle, reflector finish and diffuser.

Construction

Luminaire body made of die cast aluminium
Softening diffuser provided

Factory recommends 9" minimum plenum height when installing driver splice box from below

Photometrics

For current IES files please visit usa.flos.com

Warranty

2 years from date of sale.

Finish

B1 White CU Copper 74 Black BU Blue GL Matt Gold



Electrical

Fixture is constant current, low voltage LED with integral power supply

Fixture is 9.2 watts

Notes

Pre-installation frame has to be ordered separately

Non IC rated luminaire

Splice Box has to be ordered separately.
3 Options:

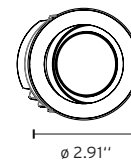
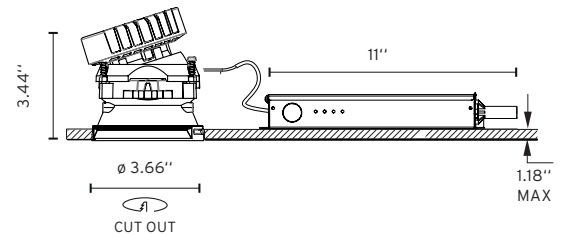
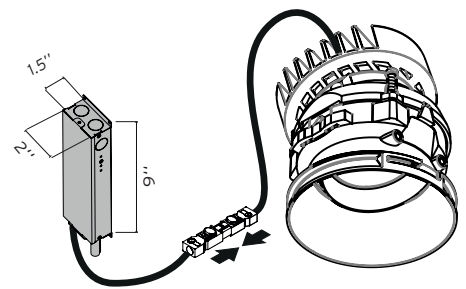
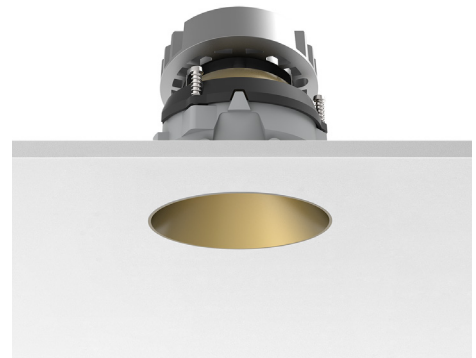
- 0-10V Dimming 120V
- 0-10v Dimming 277 V
- ELV Dimming 120 V

Available in 5 different finishes: Black, White, Gold, Copper and Blue

Maximum tilt angle for the Kap 80 (3.2") adjustable version is 20°

LED included not replaceable

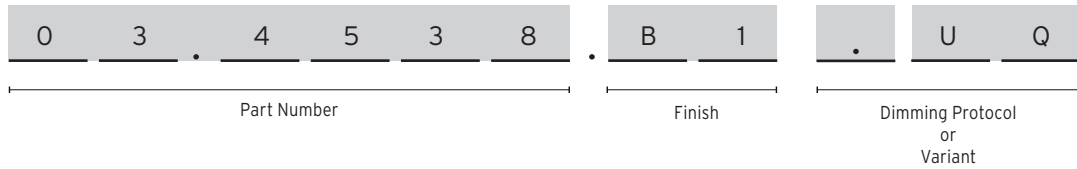
Listings: UL listed, IP44



Kap ø80 (ø3.2") Round Adjustable

Ceiling Recessed Trimless Downlight

How to Specify



How to Specify

ex. 03.4538.B1.UQ

Part Number	CCT	CRI	Initial Lumens	Watts	Beam Angle	Finish	Dimming Protocol
03.4538	3000	90	974	9,2W	19°	<input type="checkbox"/> B1 = White <input type="checkbox"/> 74 = Black <input type="checkbox"/> CU = Cooper <input type="checkbox"/> BU = Blue <input type="checkbox"/> GL = Gold	UQ = US product. Splice Box* not included *Has to be Always supply by FLOS
03.4539	2700		935		26°		
03.4184	3000		974		26°		
03.4185	2700		935		26°		
03.4540	3000		974		50°		
03.4541	2700		935		50°		


Required Splice Box

QTY	Image	Item Number	Description
		SP14W500MA-ELV-E01	Splice Box 14W, 20% dim, ELV, 120V. Size: 11" x 2" x 1.5"
		SP14W500MA-120-V01	Splice Box 14W, 1% dim, 0-10V, 120V. Size: 11" x 2" x 1.5"
		SP14W500MA-277-V01	Splice Box 14W, 1% dim, 0-10V, 277V . Size: 11" x 2" x 1.5"

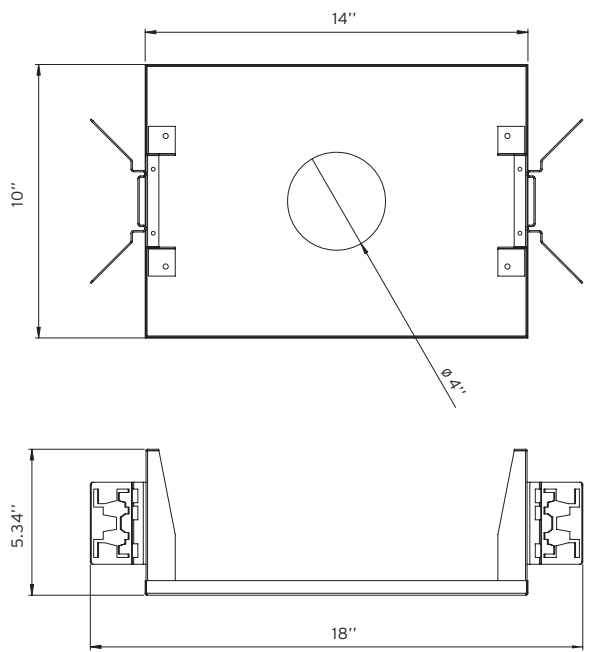
Kap $\varnothing 80$ ($\varnothing 3.2''$) Round Adjustable

Ceiling Recessed Trimless Downlight

Required Accessories

Image	QTY	Item Number	Description
		08.9102.00	Installation trimless Frame Kap80 Round

Optional Accessories

Image	QTY	Item Number	Description
 <p>Technical drawing of the Registration Tray showing dimensions: 14" width, 10" height, 18" length, and 5.34" depth. A central circular hole is labeled with a diameter of $\varnothing 4''$.</p>		TRAY-0016	Registration Tray -non electrical, place holder for non IC new construction, $\varnothing 4''$